



the Center for Health and Community

at the University of California San Francisco

ANTHROPOLOGY, HISTORY & SOCIAL MEDICINE

Fellowship Program Contact: Clair Dunne



NICK BARTLETT, MA
Graduate Student
BA, International Affairs, Pomona College
MA, International Affairs, International Health Policy and Methods, Columbia University
CURRENT RESEARCH: Harm reduction projects in Southeast Asia and China
GENERAL INTEREST AREAS: China's Methadone project, harm reduction, HIV, development industry, citizenship, migration



LIZA BUCHBINDER, MS
Graduate Student
BA, Barnard College
MS, UC Berkeley
CURRENT RESEARCH: Child labor and migration in West Africa
GENERAL INTEREST AREAS: Kinship & migration, political economy of West Africa, risk assessment, economic anthropology, politics of development



KELLY KNIGHT
Graduate Student
BA, Interdisciplinary Studies: Philosophy, Theology, and Psychology, Georgetown University
Current Student, Graduate School of Education, Concentration: Human Development and Psychology
CURRENT RESEARCH: The relationships between housing environments and women's health in San Francisco
GENERAL INTEREST AREAS: Women, reproductive health, infectious disease, structural violence, mental health



JEFF SCHONBERG, MA
Graduate Student
BA, Vassar College, Film/Drama
MA, Anthropology, Education, Photojournalism, San Francisco State University
CURRENT RESEARCH: Homelessness, Drugs, and Violence
GENERAL INTEREST AREAS: Homelessness, gangs and inner-city violence, the drug economy and HIV, Photography, the representation of suffering, globalization and neoliberalism



ALLISON TILLACK
Graduate Student
Currently pursuing an MD/PhD as part of the Medical Science Training Program
CURRENT RESEARCH: Role of emerging technologies in transforming health care, bring anthropological perspective to the process by which new medical technologies are made a part of routine clinical practice
GENERAL INTEREST AREAS: Process of collaboration between basic scientists and clinicians that affects the development, integration and stabilization of various technologies that impact the production of medical knowledge

CENTER FOR HEALTH & COMMUNITY

Fellowship Program Contact: Vaishali Patel



RYAN A. BROWN, PHD
Postdoctoral Scholar
RWJ Program
BA, Anthropology, UNC, Chapel Hill
MA, Anthropology, Emory University
PhD, Anthropology, Emory University
CURRENT RESEARCH: Translation of qualitative / ethnographic evidence into quantitative research tools, life course development, genesis of violence and risk-taking, recruitment to social networks involved in violent behavior, resilience and desistance from destructive / self-destructive life pathways



BELINDA NEEDHAM, PHD
Postdoctoral Scholar
RWJ Program
BS, Sociology, Texas A&M University
MA, Sociology, The University of Texas at Austin
PhD, Sociology, The University of Texas at Austin
CURRENT RESEARCH: Gender differences in the association between symptoms of depression during adolescence and risk factors for morbidity and mortality in mid-to late life, including truncated educational attainment, interpersonal difficulties, and health risk behavior
GENERAL INTEREST AREAS: Gender, psychological well-being, life course



DAVID REHKOPF, SCD
Postdoctoral Scholar
RWJ Program
BS, Biology, University of Puget Sound
MPH, Epidemiology/Biostatistics, UC Berkeley
ScD, Society, Human Development and Health, Harvard University
CURRENT RESEARCH: Income impacts on cardiovascular disease biological risk markers; income trajectories over the life course and chronic disease; mathematical models to quantify bias; trends in socioeconomic disparities in the United States over the last century
GENERAL INTEREST AREAS: Socioeconomic disparities in cardiovascular disease and diabetes; income effects on health; impact of early life exposures on chronic disease; epidemiologic methods; mathematical modeling



TANJA ADAM, PHD
Postdoctoral Fellow
MS, Psychology, Trier University, Trier, Germany
PhD, Health Psychology, Maastricht University, Maastricht, The Netherlands
CURRENT RESEARCH: Role of endogenous opioids in stress induced eating
GENERAL INTEREST AREAS: Stress and metabolic disease: How does stress affect food intake, related neuropeptides, fat distribution and consequential diseases, such as cardiovascular disease or type 2 diabetes & role of reward pathways in that relationship; stress and depression



JENNIFER DAUBENMIER, PHD
Postdoctoral Fellow
BA, Psychology, University of Michigan
PhD, Psychology, UC Berkeley
CURRENT RESEARCH: Effects of adding mindfulness meditation training to standardize diet and exercise-based weight loss program for overweight and obese women at risk for the metabolic syndrome
GENERAL INTEREST AREAS: Effects of mind-body therapies (e.g., mindfulness meditation, yoga) on cardiovascular disease and Type 2 diabetes risk factors; causes and consequences of stress-related eating; role of the opioid system in food intake; metabolic syndrome; psychosocial factors and cellular aging

DIVISION OF GERIATRICS

Fellowship Program Contact: Elsie Phillips



ADAM P. SPIRA, PHD
Geriatrics Research Fellow
PhD, Clinical Psychology, West Virginia University
CURRENT RESEARCH: Aging, Sleep and Depression/Anxiety
GENERAL INTEREST AREAS: Clinical Geropsychology/Geropsychiatry, Inter-disciplinary research & clinical work



JANINE K. CATALDO, PHD
Postdoctoral Fellow
PhD, Nursing theory and research, NYU
Post Doc, Psychology Oncology, IIPENN
CURRENT RESEARCH: Smoking cessation intervention for hospitalized older adults
GENERAL INTEREST AREAS: Older adults tobacco cessation; Tobacco documents- marketing to older adults



DANIEL K. CORTESE, PHD
Postdoctoral Fellow
BA, Sociology, SUNY Stony Brook
PhD, MA, Sociology, University of Texas at Austin
CURRENT RESEARCH: Tobacco marketing, in the US, to young adults through print and web media
GENERAL INTEREST AREAS: Tobacco marketing to young adults in the US; relationship between tobacco marketing and food marketing to youth & young adults; corporate social responsibility and tobacco control social movements

DIVISION OF PEDIATRICS



DAVID BRELAND, MD
Clinical Fellow
BA, Biology, UC San Diego
MPH, UC Berkeley
MD, UC Davis
CURRENT RESEARCH: Transmission and persistence rates of HPV infection among heterosexual couples
GENERAL INTEREST AREAS: GLBT adolescent issue and Adolescent male health



JENNIFER C. EDMAN, MD
Clinical Fellow
BA, Biology and Latin American Studies, University of Rochester
MD, University of Rochester
GENERAL INTEREST AREAS: Impact of media on adolescent risk behavior and body image; Adolescent gyn issues

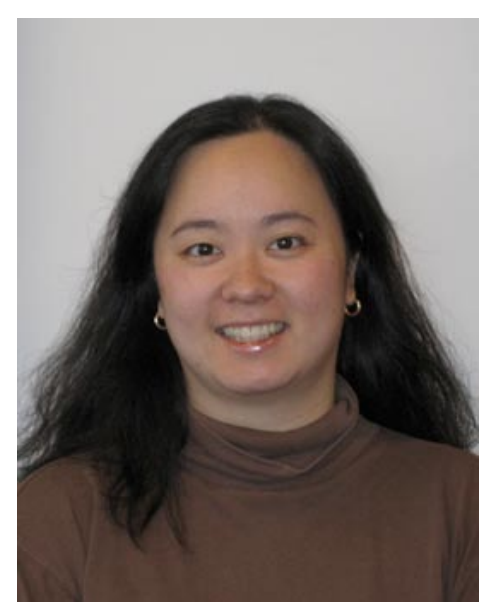


ALEXIS DINNO, SCD
Postdoctoral Research Fellow
S.D., Harvard School of Public Health
MPH, Yale School of Public Health
MEM, Yale School of Forestry & Environmental Studies
CURRENT RESEARCH: Health disparities research of tobacco & tobacco control by characterizing differential vulnerability in different racial/ethnicity, socio-economic status, class and geographic groups
GENERAL INTEREST AREAS: Neighborhood research; Quantitative modeling; Social epidemiology; Social ecology



RIYO M. JOHN, PHD
Postdoctoral Fellow
PhD, Development Studies, Indira Gandhi Institute of Development Research, Mumbai, India
CURRENT RESEARCH: Tobacco control research with special focus on India
GENERAL INTEREST AREAS: Economic analysis of tobacco consumption; poverty and tobacco; health economics

Fellowship Program Contact: Ishita Samtani



MEGUMI OKAMURA, MD
Clinical Fellow
MD, New York Medical College
CURRENT RESEARCH: Quality of health care for adolescents and young adults with childhood onset chronic conditions
GENERAL INTEREST AREAS: Chronic illness management, quality of care assessment, health care utilization, insurance, transitional care



CAROLYN BRADNER JASIK, MD
Clinical Fellow
BA, Princeton University
MD, University of Chicago
CURRENT RESEARCH: Psychosocial barriers and response to obesity treatment
GENERAL INTEREST AREAS: Pediatric obesity and disordered eating



ERIC SOLOMON, PHD
Postdoctoral Fellow
BA, Linguistics, Reed College, Portland, OR
PhD, MA, Psychology, Northeastern University
CURRENT RESEARCH: Tobacco industry marketing to social/occasional/light smokers; counter marketing to targeted groups; tobacco control legislation at the state and local level
GENERAL INTEREST AREAS: Tobacco and social function; youth marketing and prevention; psychology of marketing



ANNA SONG, PHD
Postdoctoral Fellow
BA, Psychology & Political Science, University of Michigan
PhD, MA, Personality & Social Psychology, UC Davis
CURRENT RESEARCH: Development of decision-making styles and the impact it has on tobacco use in adolescents and young adults
GENERAL INTEREST AREAS: Individual differences in decision-making. Specifically, ways in which individual differences in information processing influences the decisions people make



LAURA TESLER, PHD
Postdoctoral Fellow
PhD, Cultural and Medical Anthropology, University of Arizona
CURRENT RESEARCH: Corporate social responsibility and the tobacco industry; public-private sector relations in health care services and health policy
GENERAL INTEREST AREAS: International health; tobacco consumption; health care seeking; political economy of health and social justice; Latin America and the United States



University of California
San Francisco



the Center for Health and Community

at the University of California San Francisco

GENERAL & INTERNAL MEDICINE

Fellowship Program Contact: Patricia Borg



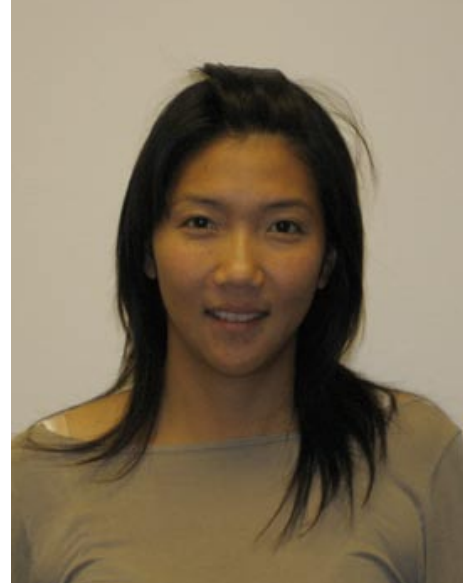
STACEY JOLLY, MD
Clinical Research Fellow
BS, Biology, Cal Poly San Luis Obispo
MD, Stanford University
CURRENT RESEARCH: American Indian Health; Cardiovascular disease; Diabetes; Health disparities; Health intervention/promotion



YEUEN KIM, MD
Clinical Research Fellow
CURRENT RESEARCH: Faculty development, innovations in delivery of care, and medical decision making with an awareness of pharmaceutical industry profiling of physicians
GENERAL INTEREST AREAS: pharmaceutical industry influence of physician and patient behavior



EDUARD VASILEVSKIS, MD
Clinical Research Fellow
MD, Oregon Health Sciences University
CURRENT RESEARCH: Hospital medicine; Quality measurement; Outcomes measurement



EMILY WANG, MD
Clinical Research Fellow
MD, Duke University
CURRENT RESEARCH: Engaging former prisoners into the health care system upon release and how physicians can create systems of care that better support this underserved population

HEALTH PSYCHOLOGY

Fellowship Program Contact: Marilyn Vella



MARIA BLEIL, PHD
Postdoctoral Scholar
BA, Psychology and Community Mental Health, State University of New York at Buffalo
PhD, MS, Clinical and Biological / Health Psychology, University of Pittsburgh
CURRENT RESEARCH: Biological mechanisms by which individual differences in negative emotionality confer risk for cardiovascular disease; common and unique pathways relating negative affective dispositions (i.e. depression, anxiety, and anger) to variation in autonomic control of heart rate
GENERAL INTEREST AREAS: Cardiovascular behavioral medicine, clinical psychology, personality psychology, psychophysiology, and behavioral genetics



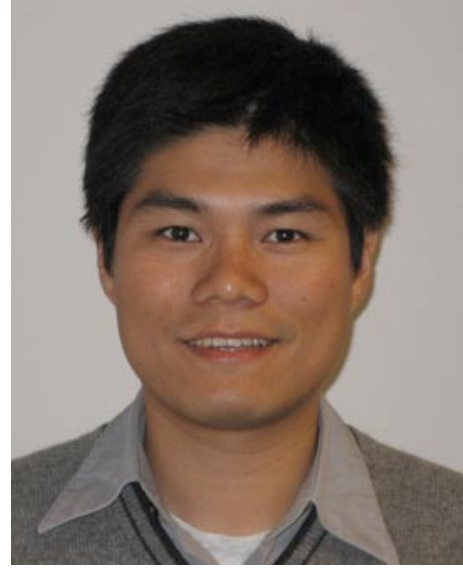
ADAM W. CARRICO, PHD
Postdoctoral Scholar
PhD, Health - Clinical Psychology, University of Miami
CURRENT RESEARCH: Efficacy and effectiveness of stress management interventions for HIV-positive persons; how multi-modal stress management interventions can be tailored to more effectively meet the needs of HIV-positive, methamphetamine using men who have sex with men
GENERAL INTEREST AREAS: Stress and coping, substance abuse, antiretroviral medication adherence, and psychoneuroimmunology

SOCIAL & BEHAVIORAL SCIENCES

Fellowship Program Contact: Linda Tracy



JULIET CHANDLER, JD, MS, RN, FNP
Graduate Student
BS, Nursing and Psychobiology, UCLA
MS, Family and Women's Health Nursing Care, UCSF
JD, Monterey College of Law
GENERAL INTEREST AREAS: Policy-related research of marginalized groups, specifically migrant farm workers



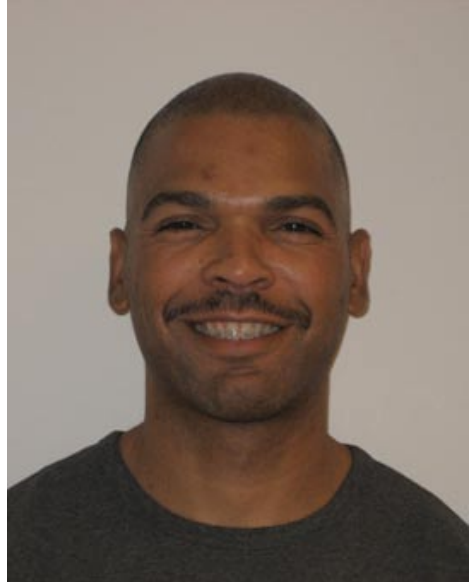
CHI-SHENG CHEN, PHD
Graduate Student
BS, Agriculture, National Taiwan University
MA, Journalism, National Taiwan University
MA, Sociology and Health Studies, University of Essex, United Kingdom
GENERAL INTEREST AREAS: Health inequality, international health, and risk studies, as well as medical and technological policy



AMY CRICKMER, MS, RN
Graduate Student
AA, Nursing, Bellevue Community College, Washington
BA, History, University of Washington
MS, Geriatric nursing, SUNY
GENERAL INTEREST AREAS: Study of telephonic care as an adjunct to traditional healthcare delivery models



JOHN FECONDO, MA, MBA
Graduate Student
BA, Religious Studies, University of Virginia
MA, Gerontology, San Francisco State University
MBA, Gerontology, San Francisco State University
GENERAL INTEREST AREAS: Supportive housing for the elderly, aging and the life course, and commodification of aging



CRAIG HUTCHINSON
Graduate Student
BA, African American Studies, UC, Berkeley
CURRENT RESEARCH: Assess HIV risk behavior among black men leaving prison
GENERAL INTEREST AREAS: Conducting HIV prevention research in the African American community, explore how social determinants of disease interact with biological processes to influence health outcomes



ANN KLOBAS, MS, RN, CFNP
Graduate Student
BS, Nursing, State University of New York at Plattsburgh
MS, Nursing, Syracuse University
GENERAL INTEREST AREAS: Focused on ethics and research literacy in nursing



MARY NOTTINGHAM, MSN, RN
Graduate Student
BSN, Indiana Wesleyan University
MSN, Clinical specialty in pediatric nursing and a focus in nursing education
GENERAL INTEREST AREAS: Studying clinical knowledge development and clinical judgment of newly graduated nurses



TANIA PACHECO
Graduate Student
BA, Sociology, California State University, Fresno
Certifications in nonprofit management and leadership
GENERAL INTEREST AREAS: Focuses on Latinos, chronic illness, and the incorporation of traditional medicine healers in public health outreach for indigenous communities in California



KRISTA SIGURDSON
Graduate Student
BA, Philosophy with a minor in Science Studies, University of British Columbia
BSW, Social Policy and its intersection with science, University of British Columbia
GENERAL INTEREST AREAS: Science studies, social theory, and health policy, particularly in the areas of gender, biotechnology, and food policy



CAROLINE STEPHENS, MSN, RN, APRN, BC
Graduate Student
BS, Biological Psychology, UC, Davis
BSN, University of Pennsylvania
MSN, University of Pennsylvania
post-masters certificate as a gerontological nurse practitioner
GENERAL INTEREST AREAS: Examines the relationship between resource utilization and quality of care among cognitively impaired nursing home residents



CINDY WOJTECKI, MSN, RN
Graduate Student
BS, Nursing, State University of New York at Plattsburgh
MS, Nursing, Syracuse University
GENERAL INTEREST AREAS: Focused on ethics and research literacy in nursing



BETH MERTZ, MA
Graduate Student
BA, Political Science & Environmental Studies at USC
MA, Public Affairs at the Humphrey Institute, University of Minnesota
CURRENT RESEARCH: Organization of oral health care systems and the dental workforce; statewide survey of dental hygienists in California, leadership challenges facing pharmacists

INSTITUTE FOR HEALTH POLICY STUDIES

Fellowship Program Contact: Ernestine Florence



LUKE BERGMANN, PHD
Postdoctoral Fellow
PhD, Social Work and Cultural Anthropology, Rackham, University of Michigan
PhD, Public Health, Tulane University
CURRENT RESEARCH: Book publication on ethnographic examination of the lives of young African American drug dealers who are moving through the Byzantine criminal justice system and the complex underground economies of inner-city Detroit. Legislated change and organizational change in substance abuse, particularly with ethnic minorities, HIV and criminal justice populations and issues around homelessness and substance abuse and relationship between urban renewal, housing policy and substance abuse



ERIC R. KESSELL, PHD
Postdoctoral Fellow
PhD, Epidemiology, UC Berkeley
CURRENT RESEARCH: The role of neighborhood composition and Individuals Race/Ethnicity on Involuntary Psychiatric Hospitalizations in San Francisco



DONNA H. ODIERNA, DRPH
Postdoctoral Fellow
PhD, School of Public Health, UC Berkeley
CURRENT RESEARCH: Explore the links among research protocols, marginalization, health disparities, and attrition
GENERAL INTEREST AREAS: Mixed methods (qualitative and quantitative) research, multi-level research design and analysis and substance use and aging/Quality of care & safety in assisted living; residential care for the elderly



ROSEMARY POLANCO, PHD
Postdoctoral Fellow
PhD, Medical Anthropology, with an emphasis in Latino Studies from the University of Chicago
CURRENT RESEARCH: Health policy issues that affect Latino communities, specifically HIV/AIDS policies and how those policies contribute to the development of prevention and treatment programs
GENERAL INTEREST AREAS: Health disparities in HIV/AIDS, disparities in access to care HIV/AIDS and elderly Latinos, cultural understandings of illness, development of culturally and age appropriate AIDS programs, treatment adherence, and utilization of complimentary and alternative medicine

CENTER ON SOCIAL DISPARITIES IN HEALTH

Fellowship Program Contact: Mercedes Dekker



ANGELA THRASHER, PHD
Postdoctoral Scholar
MPH, PhD, Health Behavior & Health Education
University of North Carolina, School of Public Health
CURRENT RESEARCH: Discrimination, distrust, and racial/ethnic disparities in antiretroviral therapy by HIV+ patients
GENERAL INTEREST AREAS: Discrimination, distrust, and healthcare outcomes: racism and health; HIV/AIDS in African American communities; measurement issues in health disparities research

OBSTETRICS, GYNECOLOGY AND REPRODUCTIVE SCIENCES

Fellowship Program Contact: Sarah Gilbert



MARCIA A. ELLISON, PHD
Postdoctoral Fellow
BA, Anthropology, Tufts University
MA, Anthropology, UCLA
PhD, Anthropology, UCLA
CURRENT RESEARCH: Childbearing decision-making, end-of-life family conferencing, the impact of ethnicity on fertility treatment seeking
GENERAL INTEREST AREAS: Anthropology of reproduction, reproductive health policy, complementary and alternative medicine, end of life care



University of California
San Francisco