

www.chc.ucsf.edu
Phone: 415.476.7408

ADMINISTRATION

NANCY ADLER, PhD, DIRECTOR

DINA DUDUM FREIJ

MICHAEL DA LUZ

EDGAR MICUA

STEPHANIE STONER

JENNIFER TAGGART

DEPARTMENT OF ANTHROPOLOGY, HISTORY & SOCIAL MEDICINE

Fellowship Program Contact: Kathy Jackson



NADIA GABER, MSC

Graduate Student
MSc, Medical Anthropology,
University of Oxford, UK
BA, Postcolonial History and Gender Studies,
Harvard University

CURRENT RESEARCH:
My current projects include an ethnographic investigation of medics who founded and staffed these makeshift field clinics during the first year of the Egyptian Revolution, hoping to understand their relationship to the state-in-flux and the ethics of medical practice. The second is a journalistic look at how the case of Khaled Said's murder served to catalyze solidarity amongst ordinary Egyptians, whose bodies were called to protest by a visualization of their embodied vulnerability to the neoliberal state.

GENERAL INTEREST AREAS:
Medical humanitarianism
Human rights discourse
Physician-patient relationship
"global health" and Medical education
Pain and suffering in conflict setting



SARA R. ROBERTSON

Graduate Student
BA, History, North Carolina State University
BA, Communication, North Carolina
State University

CURRENT RESEARCH:
My primary research will focus on botanical remedies extant during American settlement and expansion amongst traditional, domestic, and professional medical disciplines. I am particularly interested in forgotten ethnobotanical knowledge, social constructions of the body relative to disease, and discourses that determined which botanical remedies survived coalescent political, cultural, and professional spaces during the Colonial Period, Revolutionary Era, and Early Republic.

GENERAL INTEREST AREAS:
Folk medicine
Pharmaceuticals
Botanical remedies
Gender studies
Colonialism and imperialism
Early American history
Phytochemistry



MARGARET R. VIGIL-FOWLER

MA, History, Boston University
BA, History and English, University of Denver

CURRENT RESEARCH:
Women medical professionals' involvement in women's rights in the context of nineteenth-century transatlantic reform movements

GENERAL INTEREST AREAS:
Role of the state in health, gender and the history of the body, and medicine and empire

CENTER FOR HEALTH & COMMUNITY

Fellowship Program Contact: Michael Da Luz



PARISSA J. BALLARD, PHD

Robert Wood Johnson Health and Society Scholar
PhD, Child and Adolescent Development,
Stanford University
MA, Developmental Psychology,
Wake Forest University
BA, Psychology and Sociology,
Wake Forest University

CURRENT RESEARCH:
My current research interest is how social relationships affect health. I study social relationships within families, peer groups, and between individuals and their various communities. I study both predictors and outcomes of positive social relationships at multiple levels of analyses. For example, I investigate how physiology, social context, and their interaction affect developing social relationships and how such social relationships might promote or hinder positive health.

GENERAL INTEREST AREAS:
Social development and health
Civic engagement
Prosocial behavior
Positive social relationships
Stress reactivity
Social contexts



KEELY A. MUSCATELL, PHD

Robert Wood Johnson Health and Society Scholar
PhD, Psychology, University of California, Los Angeles
MA, Psychology, University of California, Los Angeles
BA, Psychology and Spanish, University of Oregon

CURRENT RESEARCH:
My current research focuses on the brain systems that link the social environment and health, with an emphasis on the neural mechanisms by which social stress leads to inflammation. A related line of work explores how social status affects neural responses to threatening social information.

GENERAL INTEREST AREAS:
Theory and methods from social psychology
Cognitive neuroscience, and psychoneuroimmunology to study how the social world is processed by the brain and translated into physiological changes that can affect health and well-being



KELLY R. KNIGHT, PHD, MD

Faculty
PhD, Medical Anthropology,
University of California, San Francisco
MED, Psychology, Harvard University
BA, Interdisciplinary Studies, Georgetown University

CURRENT RESEARCH:
My current research explores the treatment of chronic pain among substance using patients as a clinical and social problem. I am conducting a three-year ethnography funded by the National Institute of Drug Abuse of chronic pain management in six San Francisco Bay Area safety-net, primary care clinics and patient home communities to understand the phenomena of chronic pain, opioid analgesic prescribing, and medication use. Study findings will be used to inform clinical practice guidelines for treating substance-using patients with chronic pain.

GENERAL INTEREST AREAS:
The social construction and experience of addiction
Co-morbidity (HIV, substance abuse, mental illness), homelessness, and US urban health
Chronic non-cancer pain, clinical uncertainty, and scientific evidence



LISA F. STERN

Graduate Student
MSN, Women's Health and Adult Primary Care,
Yale School of Nursing, Yale University
BA, History and Science, Harvard College

CURRENT RESEARCH:
History - IVF technologies Clinical research -
contraception among family planning providers

GENERAL INTEREST AREAS:
Women's health and society/social change
History of health policy
History of medicine and nursing in the U.S.

the Center for Health and Community

at the University of California San Francisco

Fall Welcome Event

October 10, 2013

Meet Our New Affiliate Faculty, Students & Scholars

CENTER FOR TOBACCO CONTROL RESEARCH & EDUCATION

Fellowship Program Contact: Kathleen Franklin



CATRINA CHAMBERS, PHD

Postdoctoral Fellow
PhD, Public Policy, St. Louis University

CURRENT RESEARCH:
My current research hopes to focus on the return on investment (ROI) of tobacco policy as it relates to individuals with chronic disease such as asthma. Asthma is my particular interest because over the past nine years my professional and volunteer activities have focused on various lung health and policy issues. Additionally, my dissertation explored the effect statewide smoke-free ordinance had on emergency department use among the adult asthma population.



JAMIE GUILLORY, PHD

Postdoctoral Fellow
PhD, Communications, Cornell University
MS, Communications, Cornell University

CURRENT RESEARCH:
My primary research interests focus on how new forms of technology affect perceptions and behavior in health contexts. My most recent research focuses on using new technology (e.g. mobile health Apps, SMS text messaging) to study the effects of social influence and social support on health behaviors (e.g. eating, exercise behaviors, chronic pain).



RYAN LINDSAY, PHD, MPH

Postdoctoral Fellow
PhD, Communications, San Diego State University
MPH, University of California, San Diego

CURRENT RESEARCH:
My research interest is the impact that substance use, including tobacco, has on infectious diseases of global importance including HIV and tuberculosis (TB). Prior to doctoral studies, I studied substance use and risky sexual behavior among street adolescents in the Philippines as part of my graduate studies for the Masters of Public Health program at Brigham Young University.



LAUREN DUTRA, SCD

Postdoctoral Fellow
ScD, Public Health and Social Epidemiology,
Harvard University

CURRENT RESEARCH:
My current research interests include disparities in smoking-related disease, the targeted marketing of vulnerable populations by tobacco companies, and the economic impact of smoking on our country. My dissertation focused on experiences of injustice and smoking behavior in South Africa and the U.S.



LOUISA HOLMES, PHD

Postdoctoral Fellow
PhD, Geography and Public Policy,
University of Southern California

CURRENT RESEARCH:
My dissertation research used the BM-IHLSS data to study behavioral (smoking), physiological (C-reactive protein) and psychological (distress) stress as a function of neighborhood characteristics. While at USC, my work included collecting spatial data in New Orleans neighborhoods to study local recovery efforts following Hurricane Katrina, consulting on surveys of U.S. - and foreign-born Latinos in San Diego County. I recently managed a community-based representative survey of foreign-born Mexicans in Los Angeles County. While at UCSF, I was looking forward to participating in data collection efforts involving young adults in San Francisco County to better understand their tobacco use habits.



SARAH MILOV, PHD

Postdoctoral Fellow
PhD, History and American Political Culture,
Princeton University

CURRENT RESEARCH:
My dissertation, "Little Tobacco: The Business and Bureaucracy of Tobacco Farming in North Carolina, 1920-1964," examines how tobacco farmers sought to control their economic horizons during the "Cigarette Century." I plan to transform my dissertation into a book, expanding my analysis to include the role of farmers in the litigation and settlement of the 1990s. I'm also interested in exploring the role of farmers as trade missionaries: how did farmers themselves "brand" their tobacco as of the highest quality? How did that help them capture new markets, particularly in Eastern Europe and southeast Asia?

OSHER CENTER FOR INTEGRATIVE MEDICINE

Fellowship Program Contact: Yvette Coulter



ALEXANDRA CHANG

Postdoctoral Fellow
MD Candidate, School of Medicine,
University of California, San Francisco
BA, Spanish, University of California, Irvine

CURRENT RESEARCH:
My current research includes the effect of acupuncture on pain, nausea, mood, and other symptoms in the inpatient setting; Group acupuncture in the outpatient setting among patients with painful diabetic neuropathy.

GENERAL INTEREST AREAS:
Integrative medicine
Pain management
Regional anesthesia



MARISSA B. LAPEDIS

Postdoctoral Fellow
MD Candidate, Medicine,
University of Michigan

CURRENT RESEARCH:
I am currently joining Dr. Dhruva's pilot project to research the effect of a whole-systems Ayurvedic intervention on quality of life in breast cancer survivors.

GENERAL INTEREST AREAS:
Ayurvedic medicine
Meditation
Yoga
Traditional Chinese medicine



ASHLEY E. MASON, PHD

Postdoctoral Fellow
PhD, Clinical Psychology, University of Arizona
BA, Psychology and Sociology, Northwestern University

CURRENT RESEARCH:
My current research focuses on the intersection of psychological stress, self-regulatory capacity, and the food reward process. Food reward, or the process by which eating certain foods reinforces behavior that increases the frequency with which one seeks out and consumes these foods, is a normative process that has historically been adaptive in helping people to consume life-sustaining foods. I am specifically interested in investigating dietary interventions that intend to reset the food reward process, and both stress and self-regulatory capacity as moderators of intervention efficacy.

GENERAL INTEREST AREAS:
Stress, self-regulatory capacity, health behavior (e.g., exercise), and food reward
Stress, disease progression, inflammation, and cellular aging
For whom, and through what mechanisms, interventions with divergent theoretical underpinnings bolster self-regulation, health behavior, and health outcomes

PHILIP R. LEE INSTITUTE FOR HEALTH POLICY STUDIES

Fellowship Program Contact: Jessaca Machado



JESSICA N. COHAN, MD

Postdoctoral Fellow
MD, Medicine, Weill Cornell Medical College
BS, Microbiology, California Polytechnic State
University

CURRENT RESEARCH:
My current research is focused on evaluating the effectiveness of patient education tools to improve shared decision making in patients undergoing surgery. I am specifically interested in how these tools can be useful in diverse populations.

GENERAL INTEREST AREAS:
I am currently focused on patient education and shared decision making in surgery. However, I also have interest in studying disparities in surgical care and the impact of psychologic factors, such as depression and relationship quality, on outcomes after surgery.



LINDSAY A. HAMPSON, MD

Postdoctoral Fellow
MD, Medicine, University of Michigan Medical School
BA, Bioethics, Duke University

CURRENT RESEARCH:
My current research includes the following:
1. Financial incentives in healthcare. Examining physician ownership of CT scanners and whether ownership influences utilization in urinary stone patients.
2. The impact of age on quality of life after treatment for prostate cancer. Evaluating changes in quality of life after treatment for localized prostate cancer and determining the effect of age on these changes.
3. Evaluating patient decision-making in treatment for urethral stricture. Using conjoint analysis methodology to understand patients' preferences regarding treatment options for urethral strictures.
4. Renal trauma and factors associated with hospital stay. Evaluating what factors within the renal trauma population are associated with increased length of hospital stay.
5. Tobacco cessation in Urology: StepUp (Smoking and Tobacco Elimination Program in Urology Patients).

GENERAL INTEREST AREAS:
Financial incentives in healthcare
Financial conflicts of interest in healthcare
Patient decision-making
Cost containment in healthcare
Genitourinary reconstruction and trauma



the Center for Health and Community

at the University of California San Francisco

DEPARTMENT OF PEDIATRICS, DIVISION OF ADOLESCENT AND YOUNG ADULT MEDICINE

Fellowship Program Contact: Twinkle Patel



MOLLY S. KOREN, MSWD

Faculty
MSW, Social Welfare, University of California, Berkeley
BA, Psychology and English, Wellesley College

GENERAL INTEREST AREAS:
Adolescent and young adult access to healthcare
Adolescent and young adult dating violence
Positive youth development
Resilience
Adolescent pregnancy and parenthood



ADAM J. LEONARD, MPH

Pediatric Fellow
MS, Pediatric Nurse Practitioner, University of California, San Francisco
MPH, Community Health, University of Minnesota
BA, Political Science and Peace Studies, Saint John's University

CURRENT RESEARCH:
Runaway and homeless youth
Care for transgender and gender variant youth
Injection drug use
Role of school-based health centers in adolescent health

GENERAL INTEREST AREAS:
Care for vulnerable young people in non-traditional clinic settings: school based health centers, clinics in juvenile detention facilities, street outreach



JOELY R. PRITZKER

Pediatric Fellow
MS, Family Nurse Practitioner, University of California, San Francisco
BA, Sociology and Spanish Literature, Wesleyan University

GENERAL INTEREST AREAS:
I am inspired to become a leader in adolescent health, someone who uses her expertise on a daily basis in direct patient care and also advocates for public policies and protocols that improve access to high quality health care for adolescents and young adults. I have a particular interest in reproductive and sexual health issues for this population



MARK D. THOMAS

Pediatric Fellow
RN, Nursing, University of California, San Francisco
BA, French and English, University of Arkansas

GENERAL INTEREST AREAS:
Adolescent sexual and reproductive health
Adolescent and young adult primary care
Nutrition and wellness
Pediatric palliative care



KORTNEY M. PARMAN

Pediatric Fellow
BS, Nursing, Emory University
BS, Nutrition and Dietetics, Samford University

CURRENT RESEARCH:
Eating disorder screening

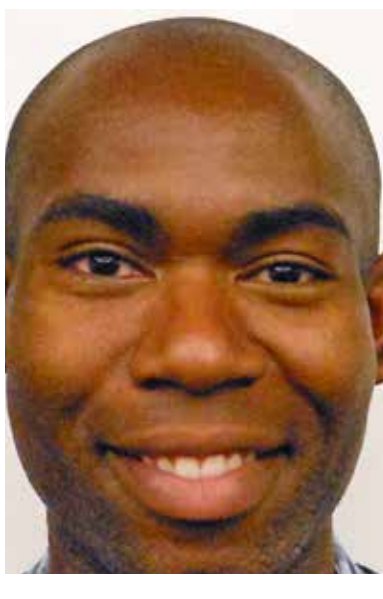
GENERAL INTEREST AREAS:
Eating disorders
Healthcare for victims of human trafficking
Nutrition



NINA E. ROSCHE

Pediatric Fellow
BA, Psychology, Boston University

GENERAL INTEREST AREAS:
Diabetes care and management (particularly Type 1)
Reproductive health



STANLEY R. VANCE, MD

Pediatric Fellow
MD, Medicine, Harvard Medical School
BS, Chemistry, Rhodes College

CURRENT RESEARCH:
My current research is a cross-section study in which adolescent medicine and pediatric endocrinology providers will be administered a survey. This national survey will assess providers' clinical experiences with transgender youth, transgender-specific medical knowledge, awareness of published guidelines for medically treating transgender youth, and perceived barriers to providing care to this population.

GENERAL INTEREST AREAS:
LGBT youth access to care
Medical management of transgender youth

DIVISION OF GERIATRICS

Fellowship Program Contact: Elaine Chow



CHARLOTTE CARLSON, MD

Clinical Fellow
MD, University of California, San Francisco
MPH, Health Policy and Clinical Practice, Dartmouth Institute for Health Policy and Clinical Practice
BA, Middlebury College

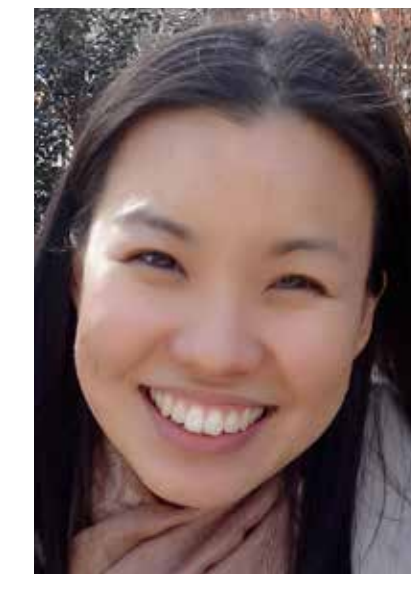
GENERAL INTEREST AREAS:
Clinician educator
Geriatrics
Medical education
Quality improvement
Care for the underserved



ROYA FATHI, MD

Clinical Fellow
MD, Pritzker School of Medicine, Division of the Biological Sciences, University of Chicago
MA, Medical Sciences, Loyola University of Chicago
BA, Business Administration, Illinois Wesleyan University

GENERAL INTEREST AREAS:
Transitions of care
Health professions education
Quality improvement
Clinical geriatrics
Academic geriatric
Medical education



AMY HSU, MD

Research Fellow
MD, Medicine, Alpert Medical School, Brown University
BA, Brown University

CURRENT RESEARCH:
Nocturia in older women

GENERAL INTEREST AREAS:
Geriatric women's health



LINDA PARK, PHD

Research Fellow
PhD, Nursing Science, University of California, San Francisco

CURRENT RESEARCH:
Cardiac rehabilitation for patients with heart failure

GENERAL INTEREST AREAS:
Cardiovascular disease primary
Secondary prevention of CVD mobile health



CHARLES RIM, DDS

Dental Fellow
DDS, School of Dentistry, University of California, San Francisco

GENERAL INTEREST AREAS:
Geriatric dentistry
Multidisciplinary care and access



MEERA SHEFFRIN, MD

Research Fellow
MD, School of Medicine, University of Pittsburgh Residency, Internal Medicine, Stanford University Hospital and Clinics
BA, Chemistry, Wellesley College

CURRENT RESEARCH:
Use of cholinesterase inhibitors in the treatment of dementia



HEATHER SCHICKEDANZ, MD

Clinical Fellow
MD, Medicine, University of California, San Francisco
BA, University of California, Berkeley

GENERAL INTEREST AREAS:
Quality improvement
Care for the underserved
Chronic care
Health care delivery systems
Innovations in primary care
Medical education



TACARA SOONES, MD

Clinical Fellow
MD, Medicine, Columbia University
MPH, General Public Health, Mailman School of Public Health, Columbia University
BA, Biological Anthropology, Harvard University

GENERAL INTEREST AREAS:
Medical education
Quality improvement
Care for the underserved
Geriatrics
Health policy
Public health



VICTORIA TANG, MD

Research Fellow
MD, Medicine, University of Texas Southwestern Residency, Internal Medicine, University of Texas Southwestern
BSc, Trinity University

CURRENT RESEARCH:
Predictors of hospitalization after pneumonia in elderly, accessibility of advanced directives

GENERAL INTEREST AREAS:
Quality improvement
Geriatric medicine

HEALTH PSYCHOLOGY

Fellowship Program Contact: Russell Heiman



LAHNA I. CATALINO, PHD

Postdoctoral Fellow
PhD, Social Psychology, University of North Carolina at Chapel Hill

CURRENT RESEARCH:
Broadly speaking, I am interested in the study of emotions, well-being, and health. In one line of research, I investigate the role of positive emotions and emotion regulation in the promotion of well-being and physical health. In another line of research, I examine how emotion regulation operates in contexts of chronic stress, and ultimately affects biological outcomes associated with disease.

GENERAL INTEREST AREAS:
Positive emotions
Emotion regulation
Stress restorative health behaviors



LAUREN J. HUMAN, PHD

Postdoctoral Scholar
PhD, Social Psychology, University of British Columbia, Vancouver BC

CURRENT RESEARCH:
My current research is the role of neurobiological processes in accuracy and bias in interpersonal impressions.

GENERAL INTEREST AREAS:
Neurobiological mechanisms linking to social processes to physical health
Social relationships and interactions
Psychological well-being
Interpersonal impressions



JIYOUNG PARK, PHD

Postdoctoral Fellow
PhD, Social Psychology, University of Michigan
BA, Psychology, Seoul National University

CURRENT RESEARCH:
Two overarching goals drive my research: (1) to shed light on the basic psychological and physiological processes that facilitate health, resilience, and well-being, and (2) to explore how socio-cultural environments shape psychological processes and what neural mechanisms underlie these effects. I examine these issues using an integrative approach that spans multiple levels of analysis, including social-cognitive, behavioral, and neural (EEG/fNIRS).

GENERAL INTEREST AREAS:
Emotion regulation
Social support
Social and affective neuroscience
Cultural psychology



ELI M. PUTERMAN, PHD

Faculty
PhD, Health Psychology, University of British Columbia, Vancouver BC

CURRENT RESEARCH:
I conceptualize health and disease as divergent trajectories stemming from the interplay of psychosocial stress, behaviors, personality, and social connections that accumulate to build resiliency or vulnerability, and their interactions with biological pathways that impact aging. At UCSF, I have focused on two contexts within which psychosocial stress is high and chronic, with significant implications for well-being and risk of disease: socioeconomic disadvantage and family caregiving. My program of research demonstrates that the association between psychosocial stress and biological aging is mitigated by physical activity, as well as other lifestyle and psychosocial resiliency factors.

GENERAL INTEREST AREAS:
Physical activity
Healthy lifestyle
Social connections
Biological aging
Stress buffering

SOCIAL & BEHAVIORAL SCIENCES

Fellowship Program Contact: Brandee Woleslagle Blank, MA



CATHERINE A. BLISS, PHD

Faculty
PhD, New School, New York, NY

CURRENT RESEARCH:
My research explores the sociology of race, gender and sexuality in medicine, though I am especially interested in scientific controversies in genetics. My book *Race Decoded: The Genomic Fight for Social Justice* (Stanford University Press 2012) examines how genomics became today's newest science of race. My latest book project examines convergences in social and genetic science in the postgenomic age.



JUSTICE M. CASTANEDA

Graduate Student
MCP, Housing Community and Economic Development, Massachusetts Institute of Technology
MA, Policy Organization and Leadership Studies, Stanford Graduate School of Education, Stanford University
BA, Urban Studies and Planning, University of California, San Diego

CURRENT RESEARCH:
Examination of violence, trauma, and economic development, with a particular focus on how inequalities are perpetuated through public policy, organizational behavior and institutional design, function and form. The focus of this work is the intersection of economic & community development and violence, and the role this intersection plays in educational & life outcomes, particularly along lines of gender, race and class

GENERAL INTEREST AREAS:
Medical & Economic sociology
Critical race and gender theories
Politics of knowledge production
Intersections between theory and public policy



CHARLES H. CLONIGER III

Graduate Student
MS, Nursing, University of California, San Francisco

GENERAL INTEREST AREAS:
Health needs of sex workers
Transgender health
Linguistic sociology



LUIS R. GUTIERREZ MOCK

Graduate Student
MPH Candidate, Public Health, San Francisco State University
MA, Ethnic Studies, San Francisco State University

CURRENT RESEARCH:
Health disparities and resilience factors among transgender people of color



FLORENCIA ROJO

Graduate Student
BA, Sociology, DePaul University

GENERAL INTEREST AREAS:
Prevention and intervention strategies for violence, particularly gender-based violence, youth violence, and teen dating violence
Sexual health education
Adolescent health



SARA RUBIN

Graduate Student
BA, Sociology, University of California, Davis

CURRENT RESEARCH:
I developed an interest in contested illnesses through her work as a medically-trained massage therapist. I've spent six years in interacting with the contested illness population in a clinical capacity, and am curious about the systemic barriers that this population faces when interfacing with medical institutions.

GENERAL INTEREST AREAS:
Contested illnesses, or illnesses with no clear biomarker

DIVISION OF GENERAL INTERNAL MEDICINE

Fellowship Program Contact: Madeline Mann



BRIAN L. CHAN, MD

Clinical Research Fellow
MD, Medicine, SUNY Downstate
MPH, Health Policy, Yale University
BA, Human Biology, Stanford University

GENERAL INTEREST AREAS:
Health care quality
Health services research
Transitional care



SARA M. KALKHORAN, MD

Clinical Research Fellow
MD, Medicine, Stony Brook University
BS, Biochemistry, Stony Brook University

CURRENT RESEARCH:
Characterization of dual users of cigarettes and smokeless tobacco products --Secondhand smoke exposures and smoking behavior among young adult bar patrons

GENERAL INTEREST AREAS:
Secondhand smoke exposures
Tobacco policy