

THE CENTER  
FOR HEALTH  
& COMMUNITY

UNIVERSITY OF CALIFORNIA,  
SAN FRANCISCO



NEW FACULTY, FELLOWS AND STUDENTS  
FALL 2021

# CENTER FOR HEALTH AND COMMUNITY

FELLOWSHIP COORDINATOR: SHAREE RIVERA



Agus Surachman, PhD  
Postdoctoral Scholar

Social determinants of health; Life course  
socioeconomic status; Accelerated aging;  
Health disparities



Matilda Allen MSc Public Health, Msc  
Philosophy and Public Policy  
Postdoctoral Scholar

Social determinants of health; Health  
inequalities; Anchor institutions



Darwin A. Guevarra, PhD  
Postdoctoral Scholar

Emotional well-being; Affect regulation;  
Stress; Coping; Health

# SOCIAL AND BEHAVIORAL SCIENCES

FELLOWSHIP COORDINATOR: BRANDEE WOLESAGLE



Thais Forneret, MA  
Sociology Graduate Student

Social inequalities; Race/class/gender;  
Ethnography; Theory



Keridwyn Spiller, BA  
Sociology Graduate Student

Maternal health care; Patient experience;  
Sex and gender; Intersectionality;  
Feminist theory; Sexual and reproductive  
health; Social inequalities in health



Zoe Samson, BSN  
Nursing Graduate Student

Home health; Community health



Kate LaForge, MPH  
Sociology Graduate Student

Opioids; Chronic pain; Peer Support;  
Housing; Social Determinants of Health

# PROGRAM ON REPRODUCTIVE HEALTH AND THE ENVIRONMENT

FELLOWSHIP COORDINATOR: ANNEMARIE CHARLESWORTH



Nadia Gaber, PhD  
Postdoctoral Scholar

Chemical Industry Documents Library;  
Politics of urban health and safety;  
Biopolitics of race, economics and  
environment

# OSHER CENTER FOR INTEGRATIVE MEDICINE

FELLOWSHIP COORDINATOR: YVETTE COULTER



Chelsea Siwik, PhD  
Postdoctoral Scholar

Health psychology; Integrative  
behavioral medicine; Stress;  
Psychoneurobiology; Cell aging; Mind-  
body interventions

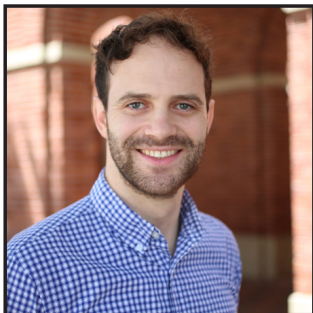
# HEALTH PSYCHOLOGY

FELLOWSHIP COORDINATOR: RUSSELL HEIMAN



Rachel Radin, PhD  
Faculty

Dysregulated eating; Stress; Metabolic health; Integrative interventions



David Newman, PhD  
Postdoctoral Scholar

Social and personality psychology; Well-being

# DEPARTMENT OF HUMANITIES AND SOCIAL SCIENCES

FELLOWSHIP COORDINATOR: KATHY JACKSON



Bri Matusovsky  
Graduate Student

Disability studies and activism; Animal rights and welfare; Non-human others; Systems of oppression; Queer feminist approaches to anthropology; Collective liberation; Systemic violence; Scientific research; Clinical trials; Bioethics



Rebecca Newmark  
Medical/Graduate Student

Embodiment; Affect theory; Disgust; Liminality; Feminist anthropologies

Tiffany Taylor, MPH  
Graduate Student

Citizenship; Im/migration; Humanitarianism; Mass surveillance; and Health disparities

# PHILIP R. LEE INSTITUTE FOR HEALTH POLICY STUDIES

FELLOWSHIP COORDINATOR: BETH THEW



Elizabeth Dzeng, MD, PhD, MPH  
Faculty

Medical sociology; Medical ethics; End of life care; Palliative care; Moral distress; Burdensome or overly aggressive care; Neoliberalism; Social justice; Human-centered design; Ecosystem design



Suni Kaiser, MD, MSc  
Faculty

Pediatrics; Health services research; Quality improvement; Health disparities



Sarah Garrett, PhD, MA  
Fellow

Maternal health; Person-centered research; Qualitative methods; Mixed methods



Christina Keny, RN, BSN, MS  
Doctoral Student

Non-Opioid Multi-modal pain management in Geriatric patient population



# PEDIATRICS

FELLOWSHIP COORDINATORS:  
KAITLIN CLANCEY AND TWINKLE PATEL



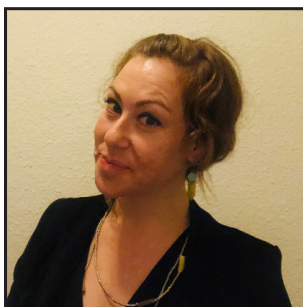
Jayme Congdon, MD, MS  
Faculty

Social and structural determinants of health; Health equity and justice; Family-centered care in pediatrics; Newborn medicine; Birth outcomes; Family planning and reproductive health equity; Public health policy; Legislative advocacy



Amanda Downey, MD  
Faculty

Eating disorders; Behavioral health



Efrat Lelkes, MD  
Faculty

Pediatrics; Wellbeing; Moral distress; Social justice; Palliative care; End of life





Matthew Meyers, MD, MPH  
Faculty

Adolescent medicine; LGBTQ health;  
Substance use



Alexis Richards, MD, MSc  
Clinical Fellow

Sexual and Reproductive Health

# CENTER FOR TOBACCO CONTROL RESEARCH AND CARDIOVASCULAR RESEARCH INSTITUTE

FELLOWSHIP COORDINATOR: KATHLEEN FRANKLIN



Poonam Rao, MD, MBBS  
Postdoctoral Scholar

Tobacco and Cannabis-related research studies; Cardiovascular effects of exposure to cigarettes, marijuana and aerosol from e-cigarettes



# CENTER FOR HEALTH & COMMUNITY



## ADMINISTRATION

Nancy Adler, PhD, Director

Elissa Epel, PhD, Associate Director

Aric A. Prather, PhD, Associate Director

Dina Dudum Freij, MPA

Sharee Rivera

Jennifer Taggart

---

## EMAIL

[chc@ucsf.edu](mailto:chc@ucsf.edu)

## PHONE

415-476-7408

## ADDRESS

3333 California Street

Suite 465

San Francisco, CA 94118